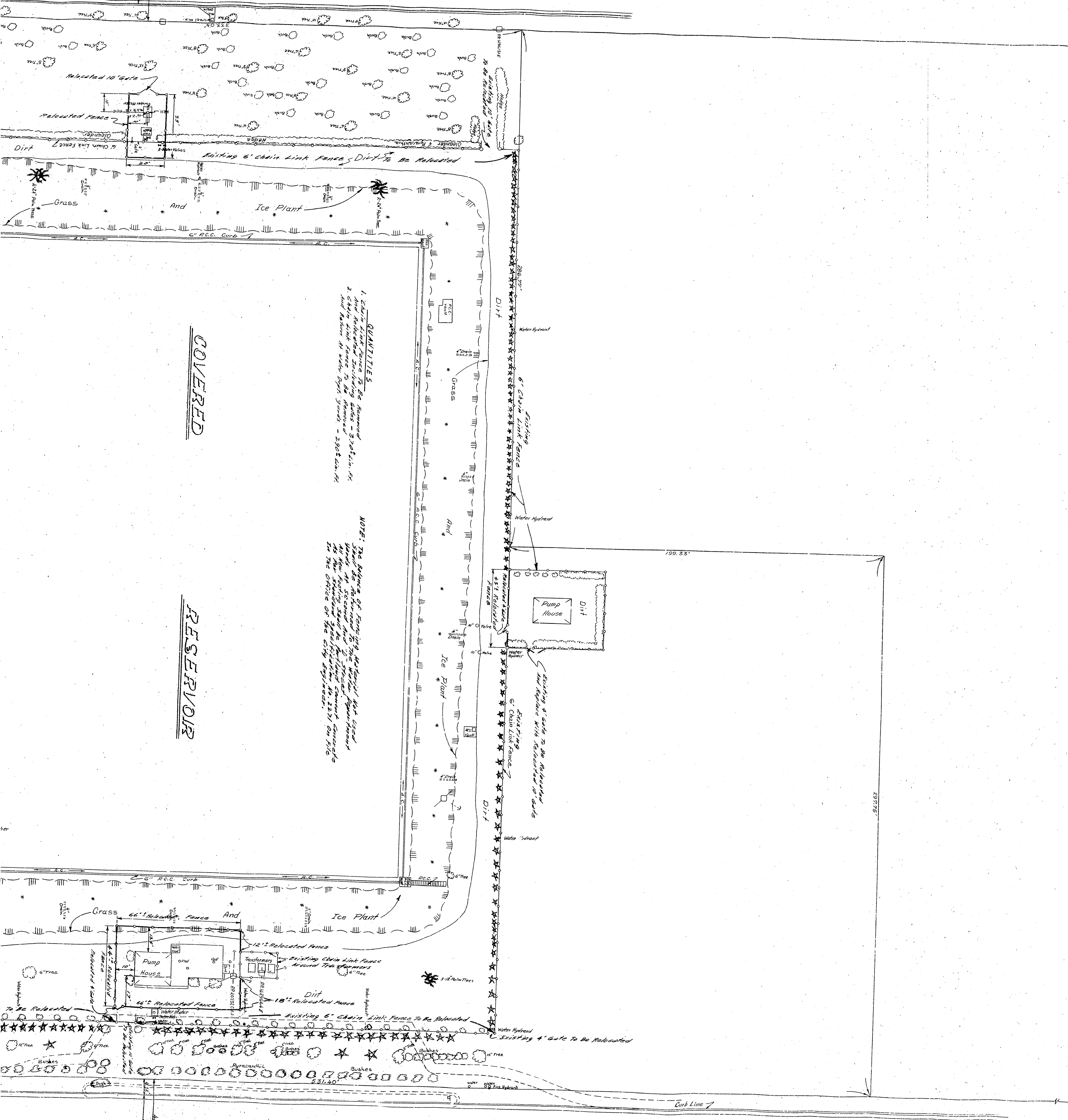


E LEROY STREET



QUANTITIES

1. Chain Link Fence To Be Removed
2. Chain Link Fence To Be Relocated - 3,720 L.F.
3. Chain Link Fence To Be Relocated - 2,908 L.F.

NOTE: The location of the Pump House, Water Hydrant, and Ice Plant is shown on this plan. All new footing shall be in accordance with the Standard Specifications for the City of St. Louis, Mo. as adopted by the Board of Public Works, 1921, and as amended by the Board of Public Works, 1922, and 1923.

COVERED

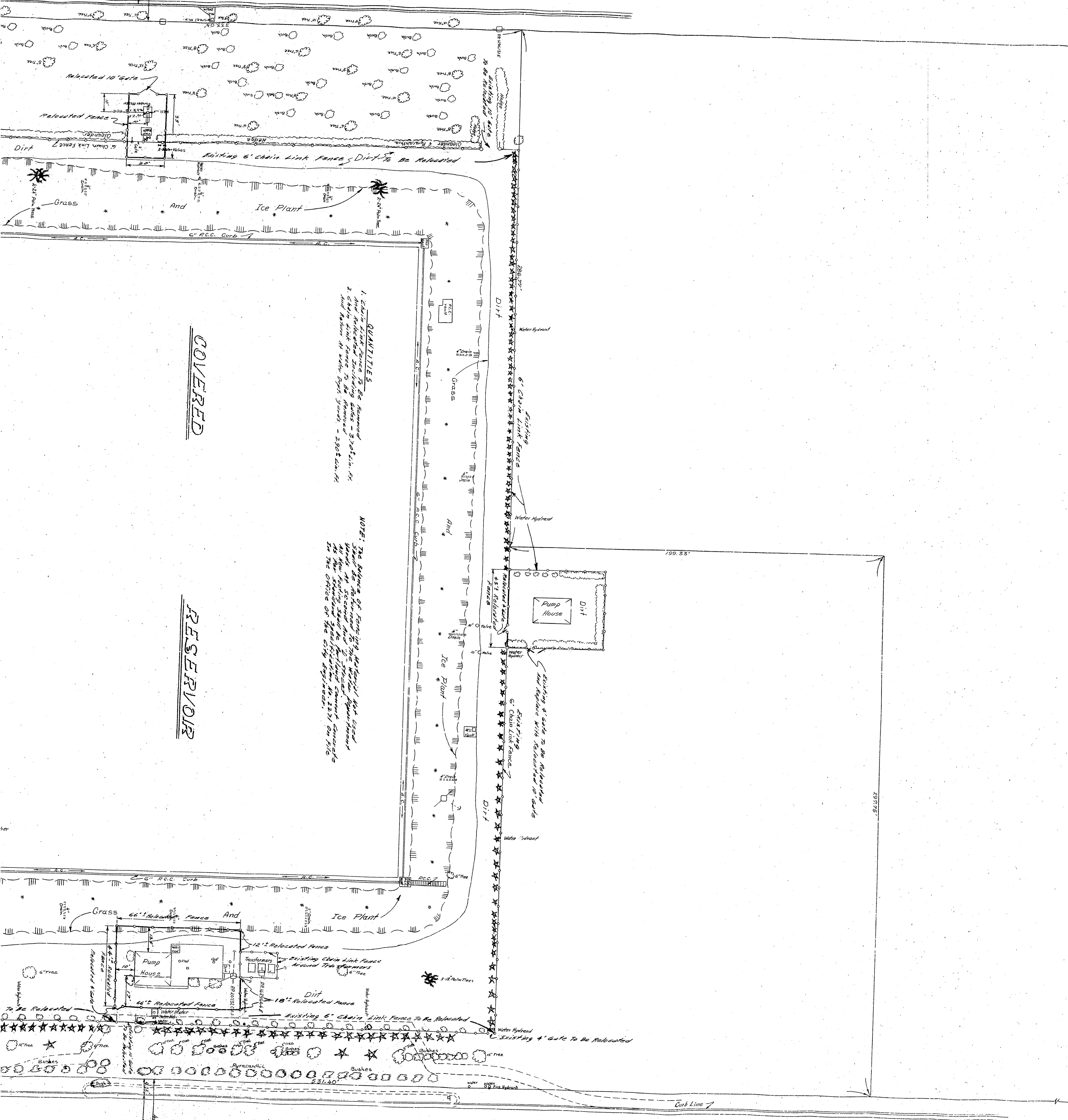
RESERVOIR

MINERSHALL

BLVD

WATERMAN AVENUE

E LEROY STREET



QUANTITIES

1. Chain Link Fence To Be Removed
2. Chain Link Fence To Be Replaced - 3,720 L.F.
3. Chain Link Fence To Be Replaced - 2,908 L.F.

NOTE: The location of Pump House, Water Hydrant, and Ice Plant is shown in this plan. All new footing shall be in accordance with the Standard Specifications for the City of St. Louis, Mo. as adopted by the Board of Public Works, No. 2271 on 7/10.

COVERED

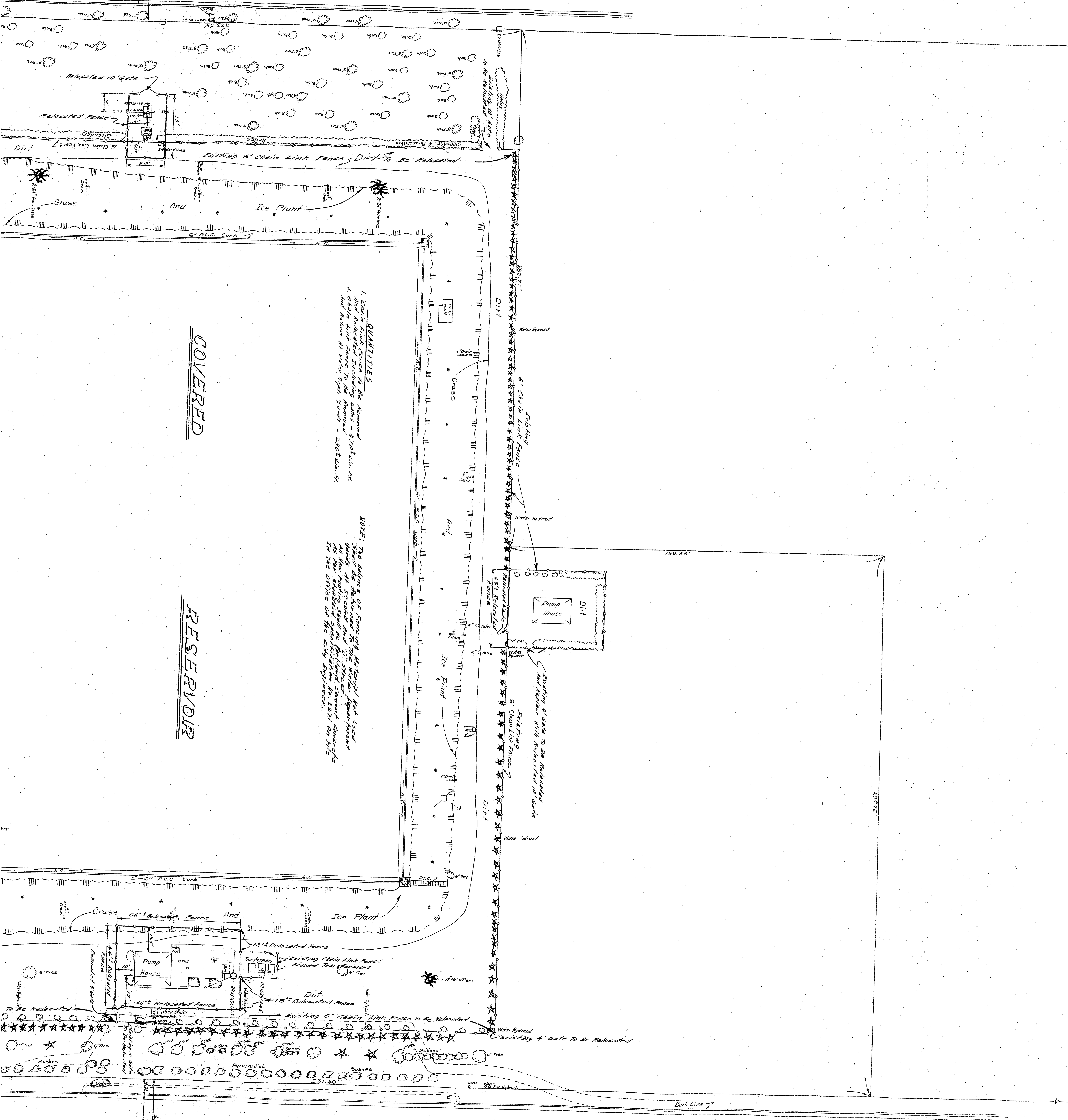
RESERVOIR

MINERSHALL

BLVD

WATERMAN AVENUE

E LEROY STREET



QUANTITIES

1. Chain Link Fence To Be Removed
2. Chain Link Fence To Be Relocated - 3,720 L.F.
3. Chain Link Fence To Be Relocated - 2,908 L.F.

NOTE: The location of the Pump House, Water Hydrant, and Ice Plant is shown on this plan. All new piping shall be installed in accordance with the Standard Specifications for Water Works in the City of St. Louis, Mo. 1921, as amended.

COVERED

RESERVOIR

WATERMAN AVENUE

BLVD

WATERMAN AVENUE

AVENUE